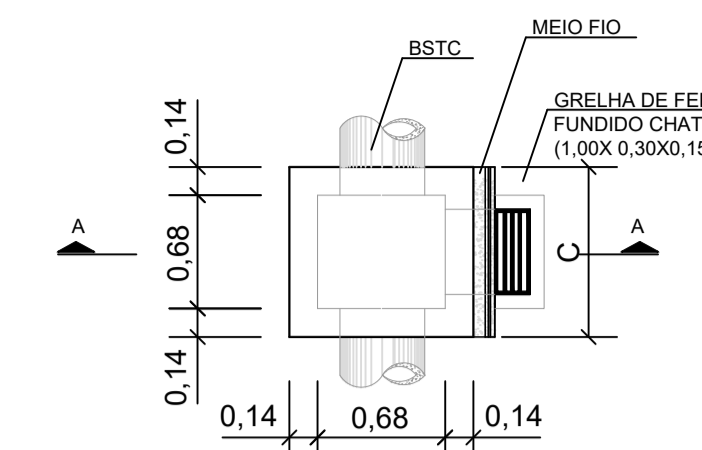
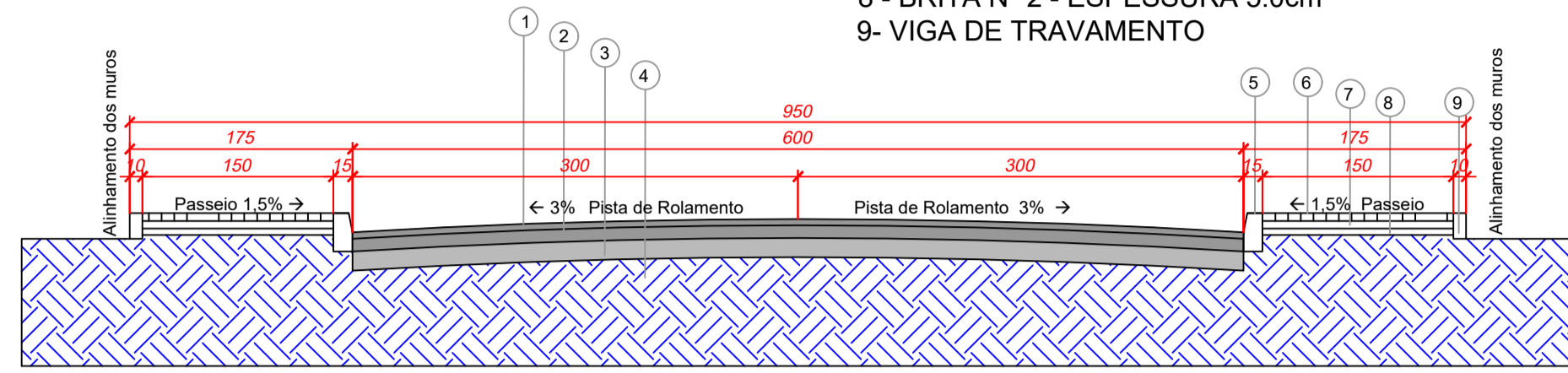


**SEÇÃO TIPO PAVIMENTAÇÃO**  
RUA LINDOLFO SENEM/ CORREIA PINTO  
ESCALA: 1/50

- 1 - REVESTIMENTO EM CBUQ - E 5.0 cm
- 2 - BASE DE BRITA GRADUADA E 12 cm
- 3 - SUB BASE MACADAME SECO E 15 cm
- 4 - SOLO COMPACTADO
- 5 - MEIO FIO
- 6 - PAVER e= 6cm
- 7 - PO DE PEDRA 5.0cm
- 8 - BRITA Nº 2 - ESPESURA 5.0cm
- 9 - VIGA DE TRAVAMENTO



**DETALHE DAS CAIXAS DE CAPTAÇÃO SOB PASSEIO**

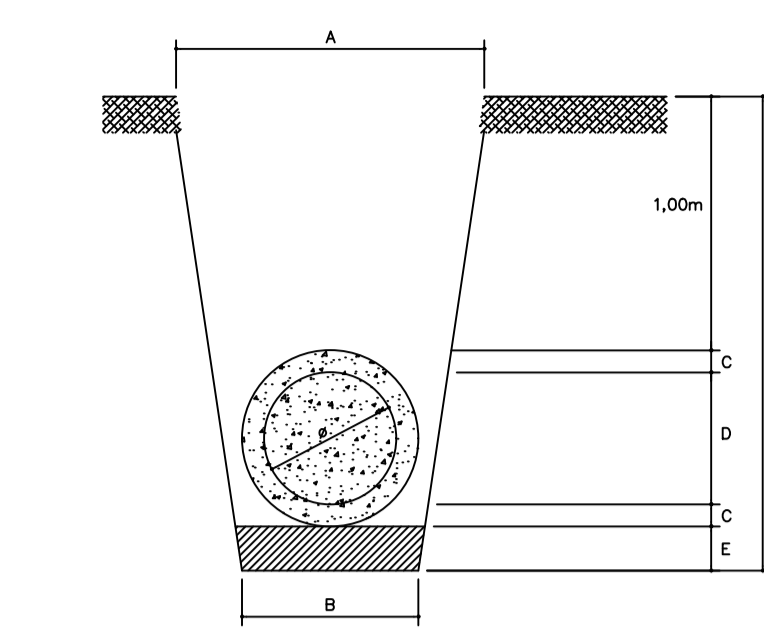
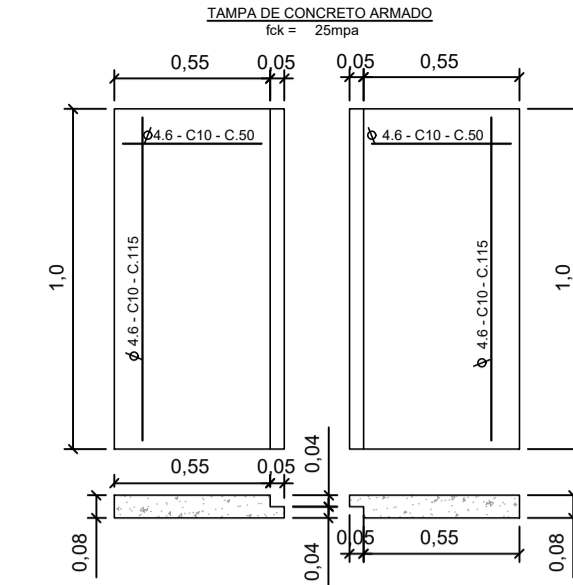
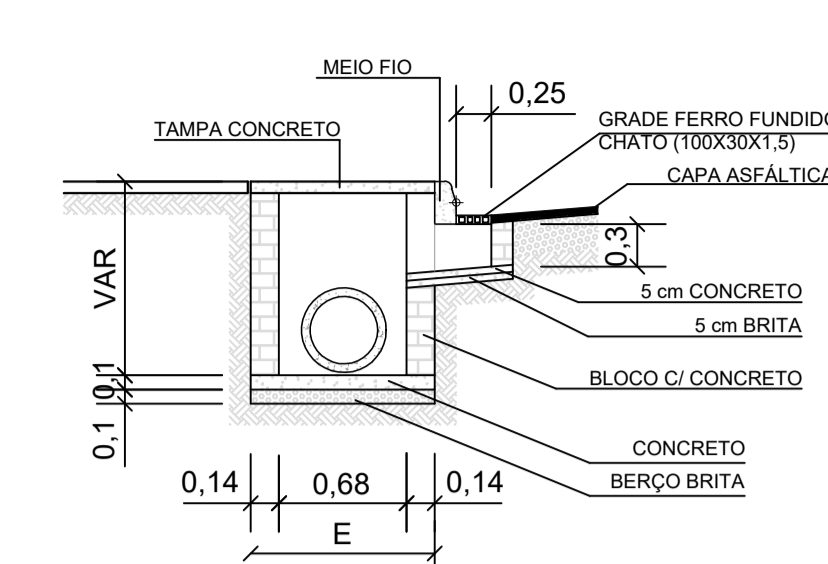
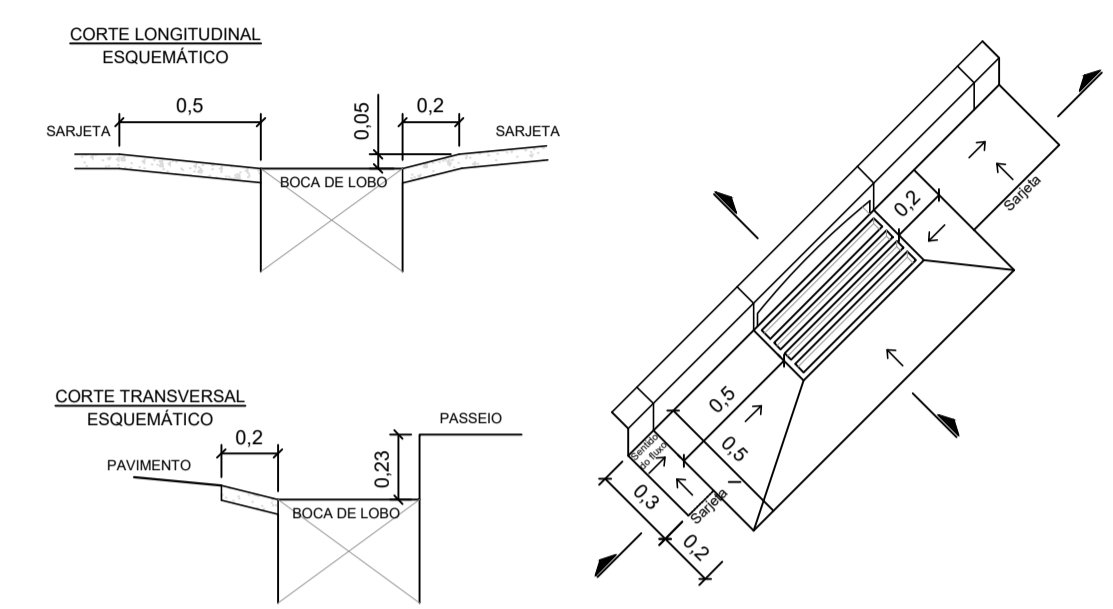


TABELA PARA ESCOLHA DAS DIMENSÕES DA CAIXA

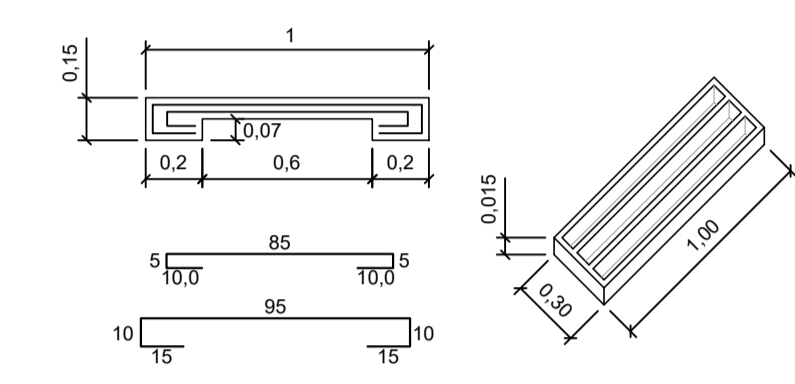
D2 (SAIDA)	C	E
CC-2 0,40	0,96	0,96
CC-2 0,60	0,70	1,00
CA-1 0,60	0,70	1,00
CA-1 0,80	0,70	1,20
CA-1 1,00	0,70	1,40
CA-1 1,20	0,70	1,70
CA-1 1,00	0,70	2,80
CA-1 1,20	0,70	3,10

Diâmetro do tubo - D	A	B	C	D	E	L
20cm	80cm	80cm	2cm	20cm	10cm	134cm
30cm	80cm	80cm	3cm	30cm	10cm	146cm
40cm	90cm	90cm	4cm	40cm	10cm	158cm
60cm	120cm	120cm	6cm	60cm	10cm	182cm
80cm	140cm	140cm	8cm	80cm	35cm	231cm
100cm	160cm	160cm	10cm	100cm	40cm	260cm
120cm	184cm	184cm	12cm	120cm	42cm	286cm
150cm	380cm	220cm	15cm	150cm	50cm	330cm
200cm	420cm	280cm	20cm	200cm	55cm	395cm

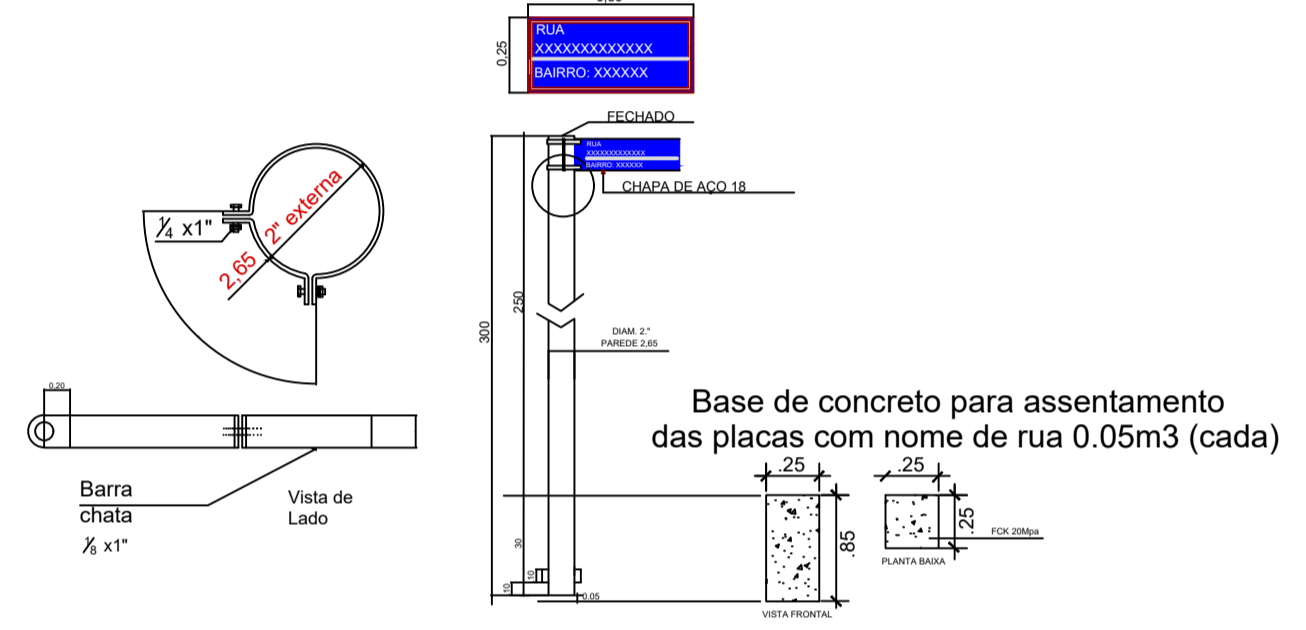
**DETALHE DA CAPTAÇÃO**



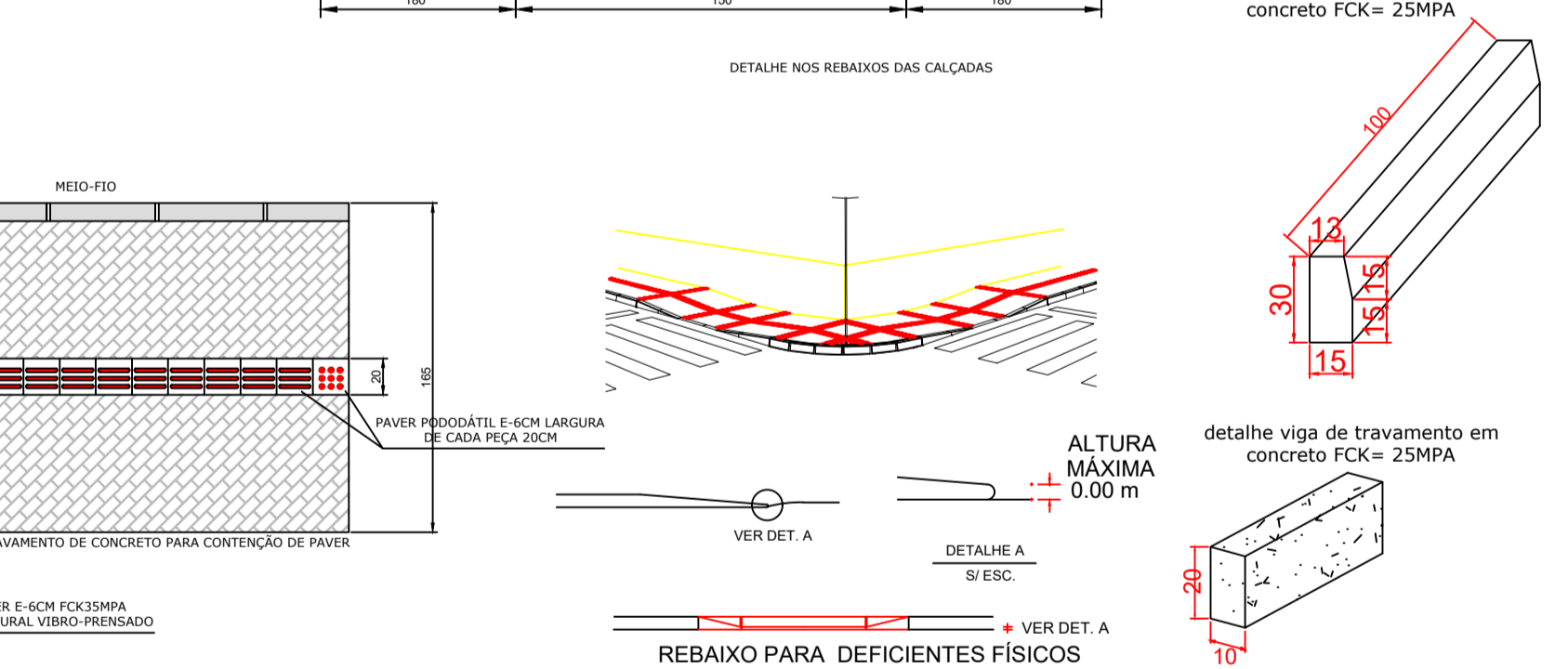
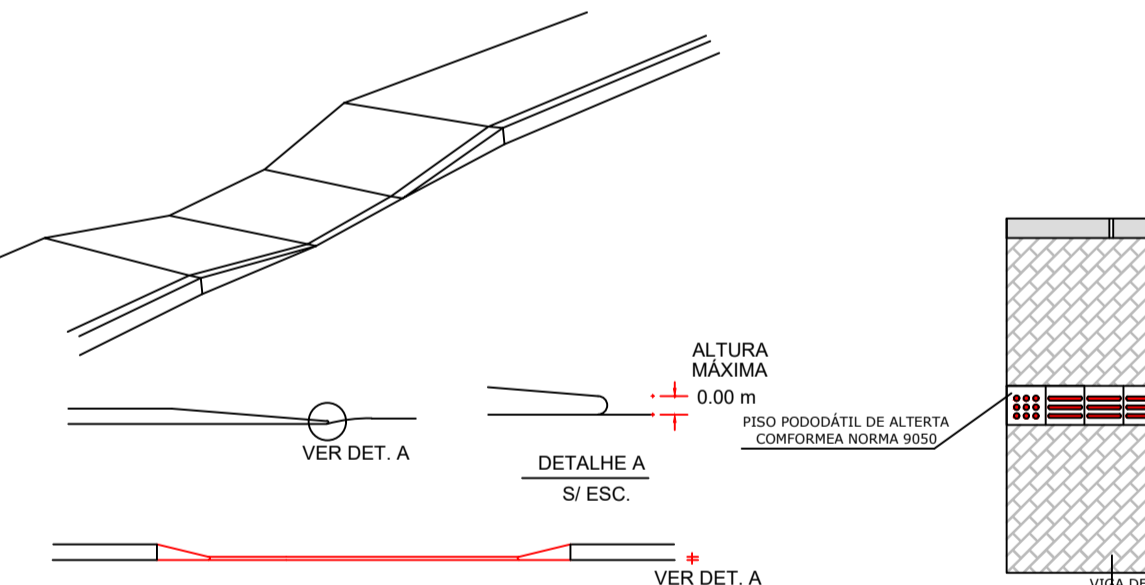
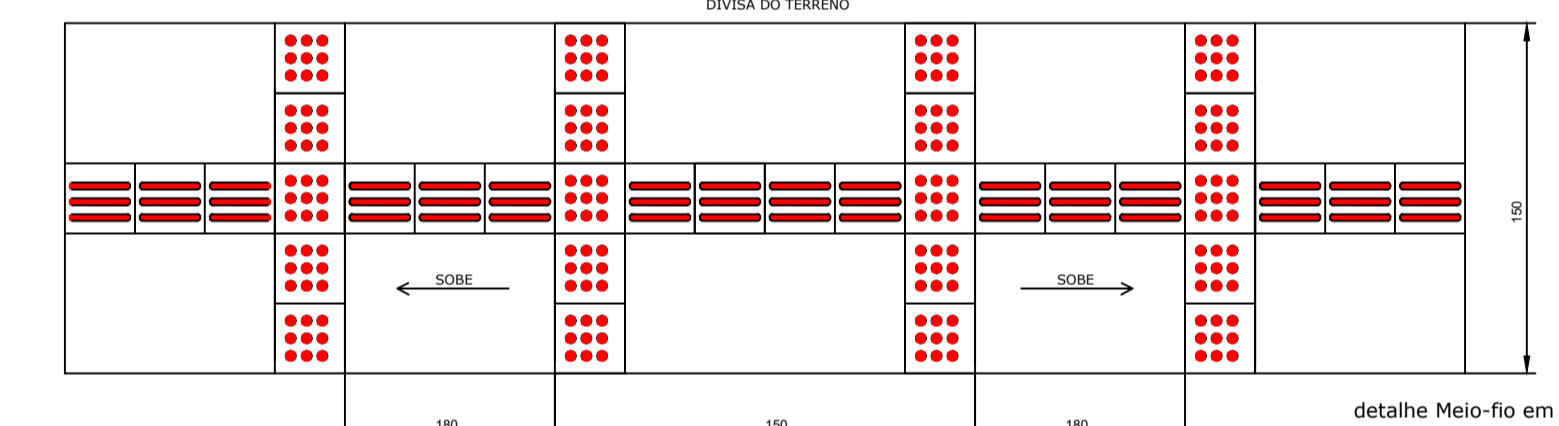
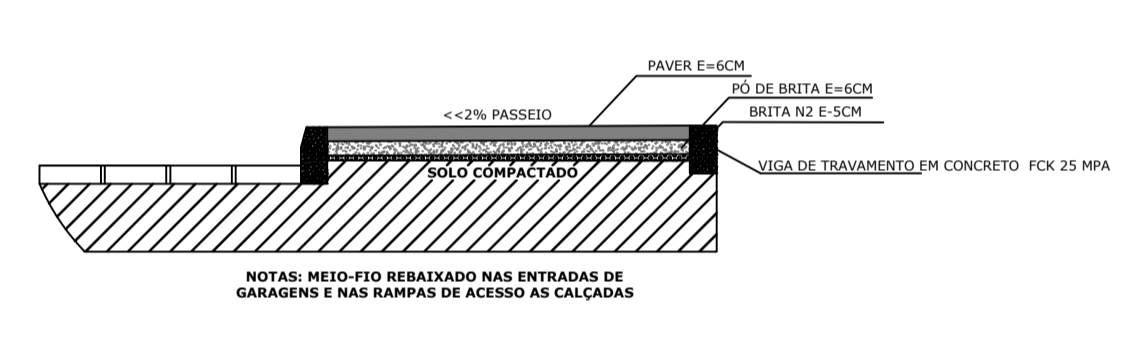
**MEIO FIO COM ENTRADA DE ÁGUA**



**Detalhe placa nome de rua**

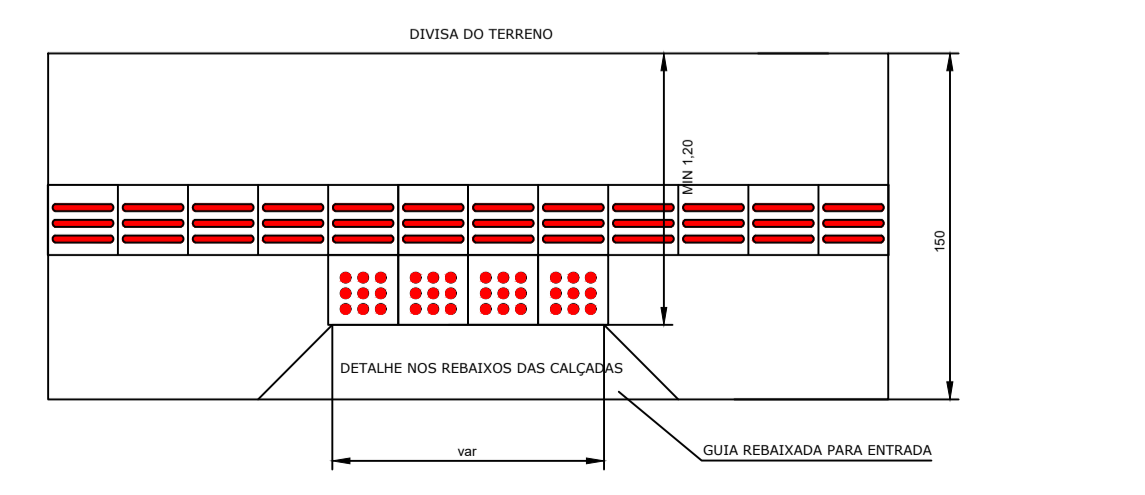
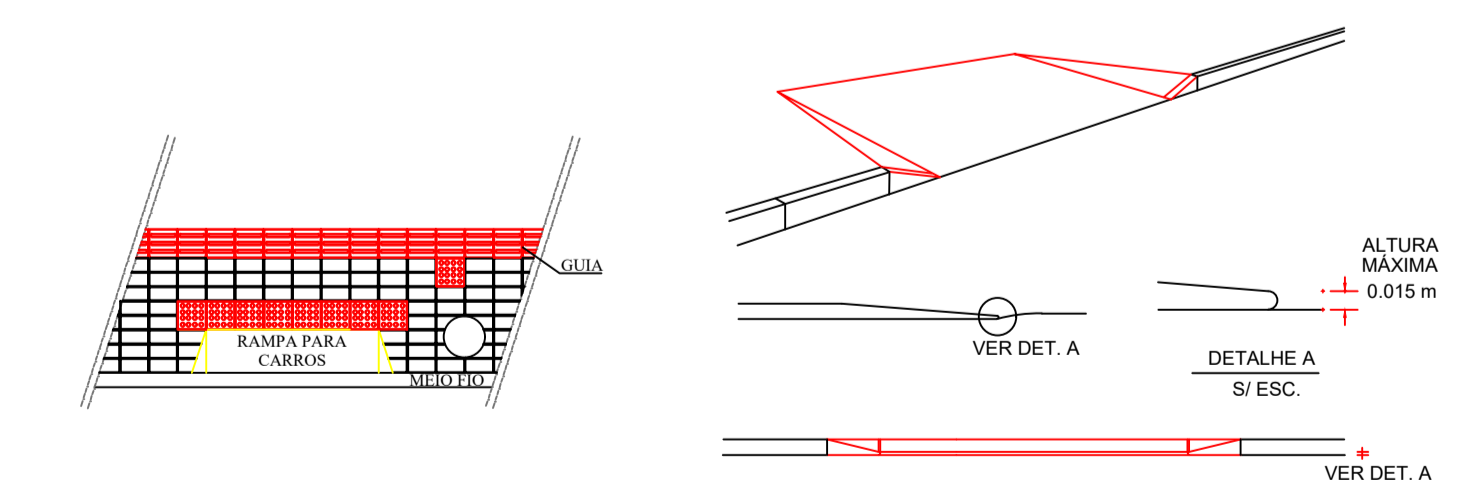


**REBAIXO PARA DEFICIENTES FÍSICOS**

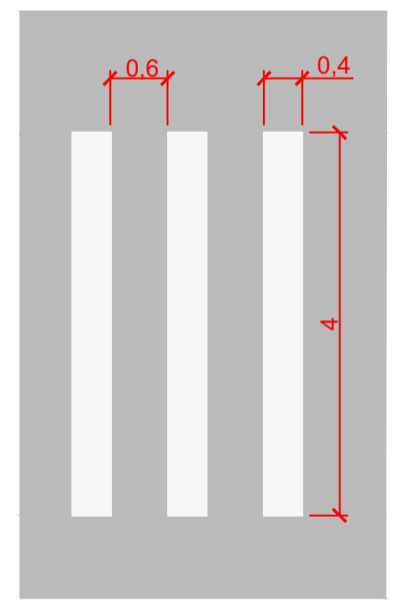


referente a seção transversal da via ser reduzida o passeio máximo implantando será com L = 1,5 metros portanto nos rebaixos para deficientes, será sinalizado com a guia alerta para a segurança dos usuários.

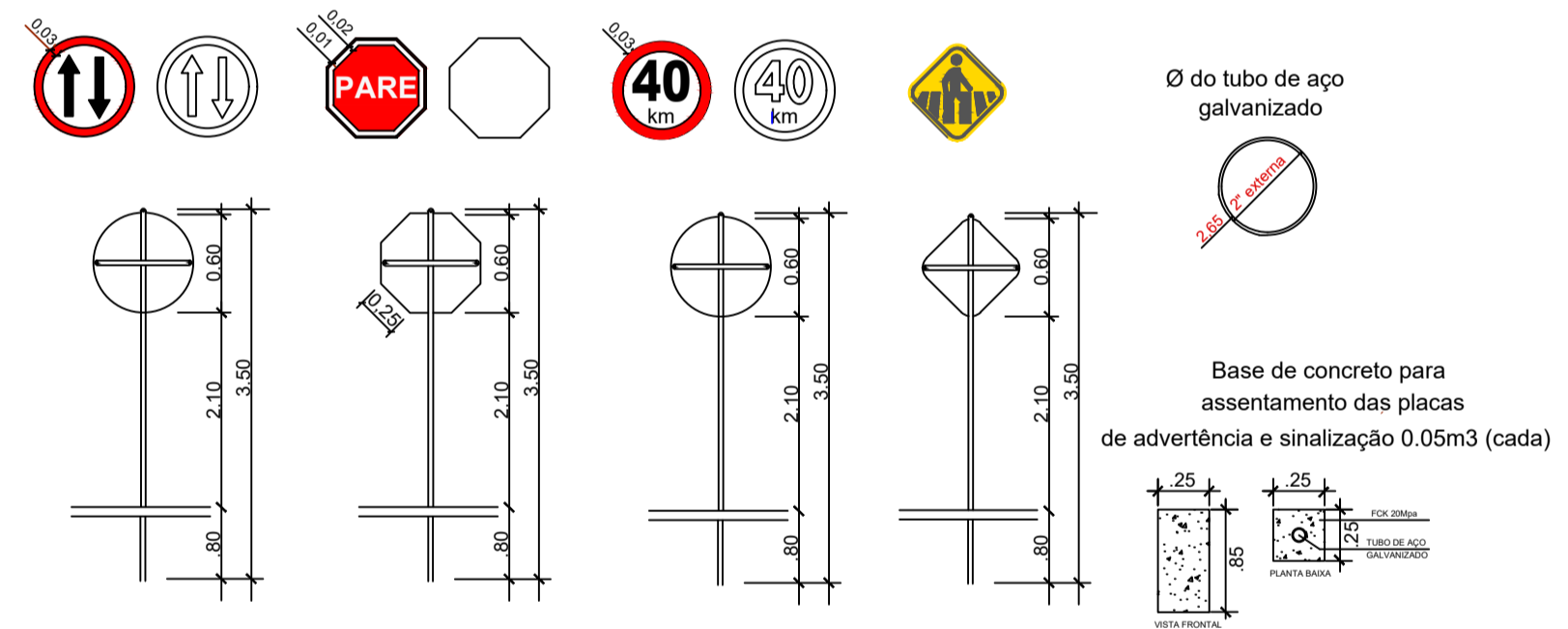
**REBAIXO PARA ENTRADAS DE CARRO**



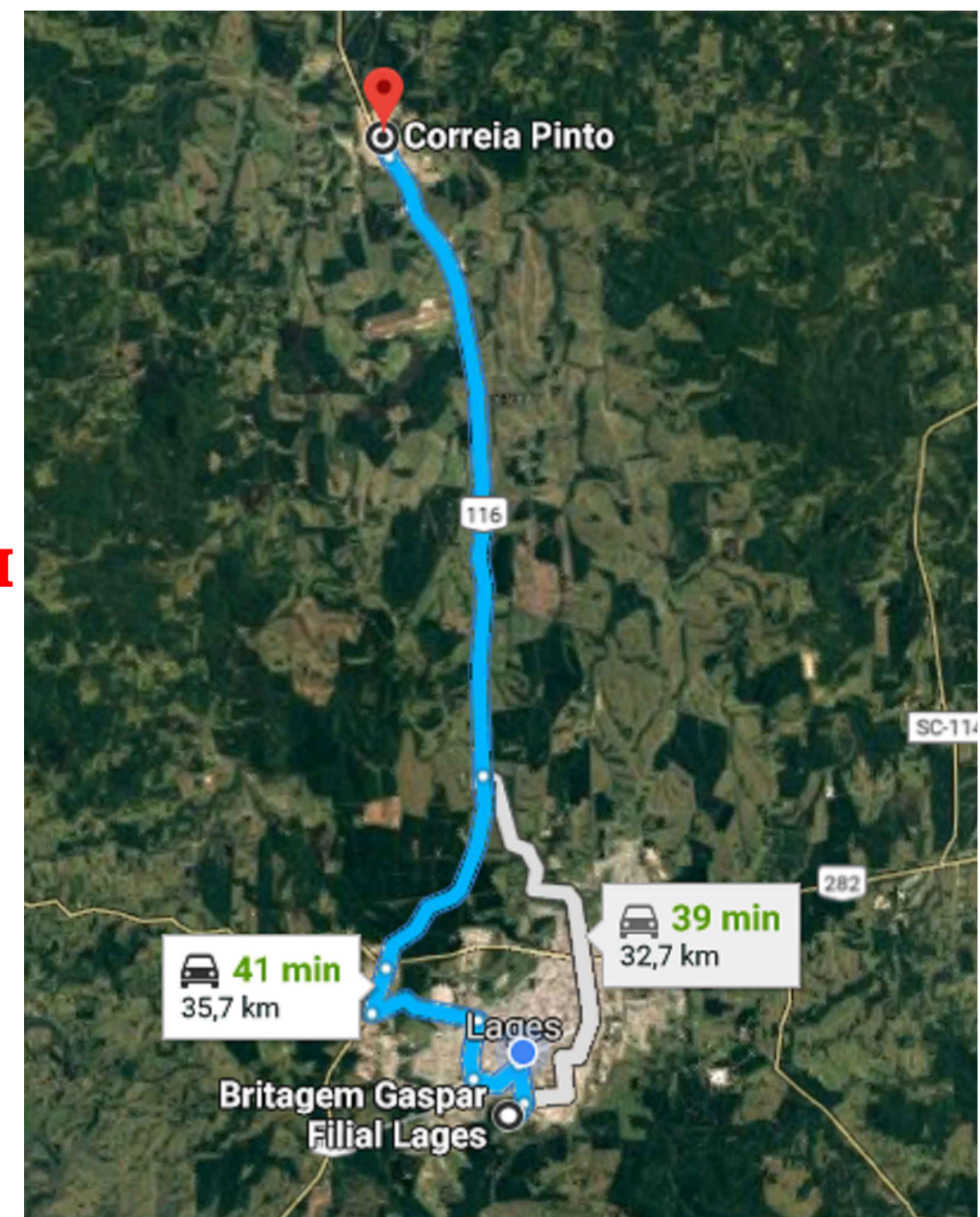
**Detalhe faixa amarela central**



**Placas com fixação através de parafuso**



**Detalhe Faixa de pedestre**



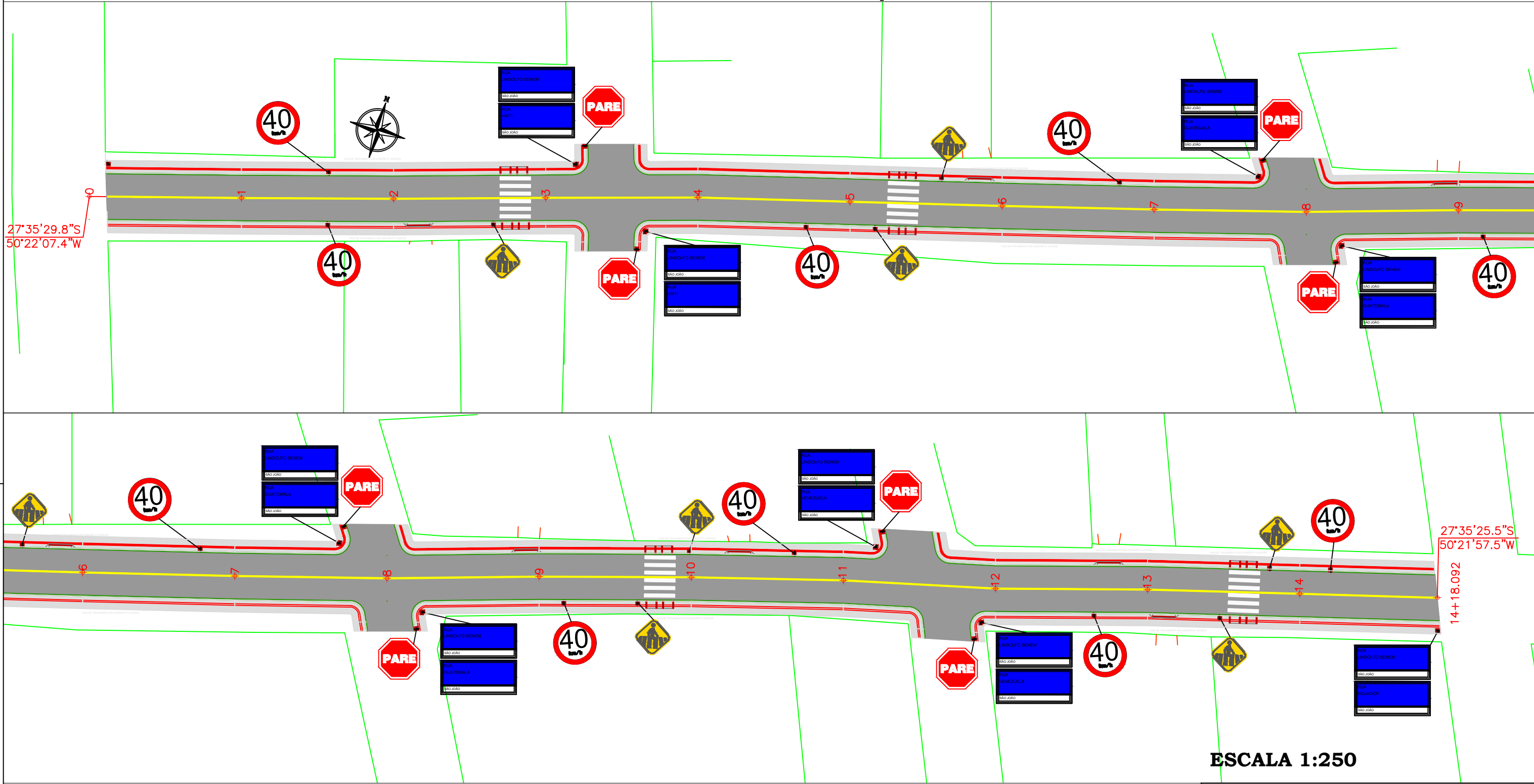
**DMT = 37,4KM**

**PREFEITURA MUNICIPAL DE CORREIA PINTO**  
SECRETARIA DE PLANEJAMENTO  
URBANIZAÇÃO DA RUA LINDOLFO SENEM

DETALHES  
ESCALA: INDICADA

RESPONSÁVEL: Antony N. Fernandes  
CREA Nº: 136779-8  
PRANCHA Nº: 10

# RUA LINDOLFO SENEM CORREIA PINTO/SC



**ESCALA 1:250**

	PREFEITURA MUNICIPAL DE CORREIA PINTO		
	SECRETARIA DE PLANEJAMENTO		
	URABANIZAÇÃO DA RUA LINDOLFO SENEM		
	PROJETO SINALIZAÇÃO	ESCALA:	INDICADA
RESPONSÁVEL	CREA N°	PRANCHA N°	
Antony N. Fernandes	136779-8	06	