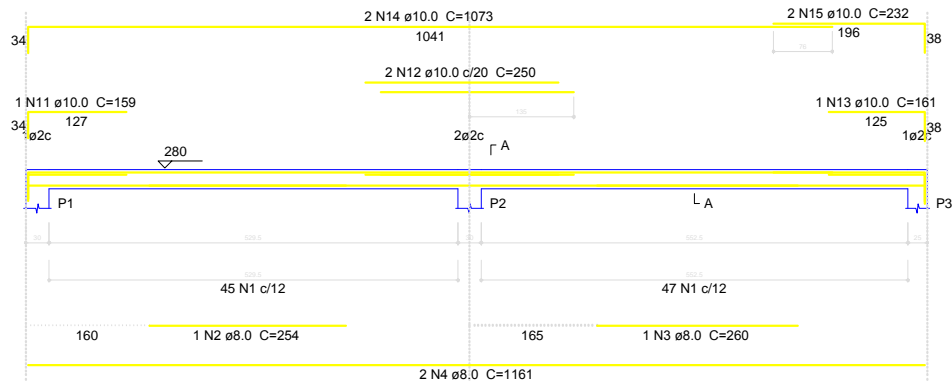
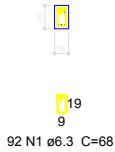


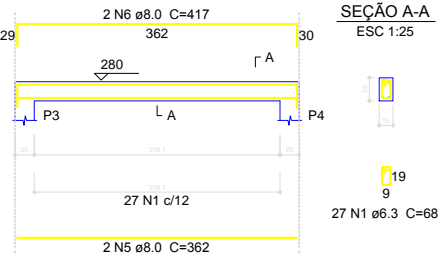
V1  
ESC 1:30



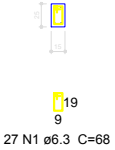
SEÇÃO A-A  
ESC 1:25



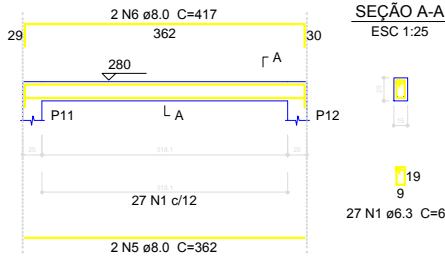
V2  
ESC 1:30



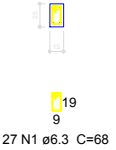
SEÇÃO A-A  
ESC 1:25



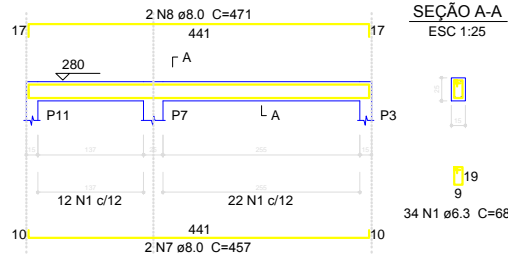
V5  
ESC 1:30



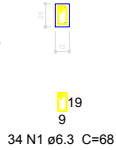
SEÇÃO A-A  
ESC 1:25



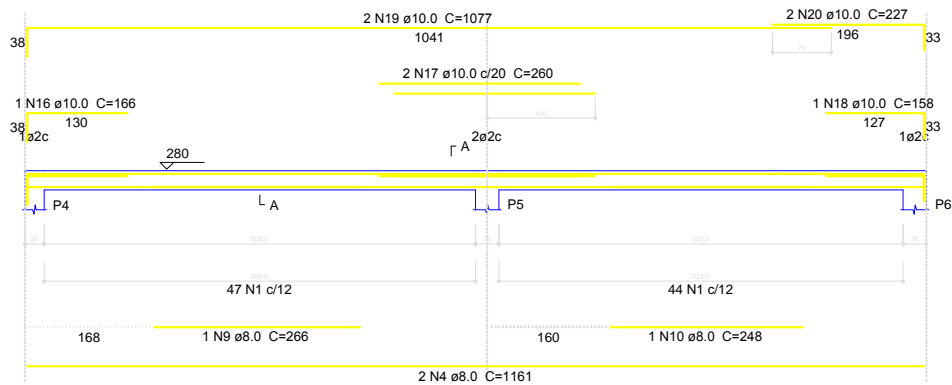
V8  
ESC 1:30



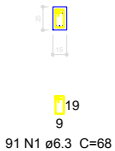
SEÇÃO A-A  
ESC 1:25



V3  
ESC 1:30



SEÇÃO A-A  
ESC 1:25



### Relação do aço

AÇO	N	DIAM	Q	V1		V2		V3		C.TOTAL (cm)
				V5	V8	V8	V8			
CA50	1	6.3	271	68	18428					
	2	8.0	1	254	254					
	3	8.0	1	260	260					
	4	8.0	4	1161	4644					
	5	8.0	4	362	1448					
	6	8.0	4	417	1668					
	7	8.0	2	457	914					
	8	8.0	2	471	942					
	9	8.0	1	266	266					
	10	8.0	1	248	248					
	11	10.0	1	159	159					
	12	10.0	2	250	500					
	13	10.0	1	161	161					
	14	10.0	2	1073	2146					
	15	10.0	2	232	464					
	16	10.0	1	166	166					
	17	10.0	2	260	520					
	18	10.0	1	158	158					
	19	10.0	2	1077	2154					
	20	10.0	2	227	454					

### Resumo do aço

AÇO	DIAM	C.TOTAL (m)	PESO + 10 % (kg)
CA50	6.3	184.3	49.6
	8.0	106.5	46.2
	10.0	68.9	46.7
PESO TOTAL			
CA50	142.5		

Vol. de concreto total (C-25) = 1.32 m³  
Área de forma total = 22.86 m²

PREFEITURA MUNICIPAL DE CORREIA PINTO  
FORÇA E AÇÃO PARA CRESCER  
ADM. 2012/2016  
END: DUQUE DE CAXIAS, n. 1569 - CIDADE: CORREIA PINTO - ESTADO SANTA CATARINA.

Secretaria Planejamento, Finanças e Desenvolvimento Econômico	Assinatura:	Eng. Civil
	Prof. VANDY FORSTER	Sinopse do Assin.
Secretaria: Maria Luiza Gonçalves	Assinatura:	Crea: 048789-6
	Secretaria: Maria Luiza Gonçalves	

Local: PARQUE DE EXPOSIÇÃO	DESENHISTA: João E.
Descrição: PROJETO ESTRUTURAL - BANHEIRO VIGAS PILARES	DATA: 05/2014
FOLHA Nº: 05/07	ESCALA: INDICADA